



VEHICLE

ALUMINIUM AND PLASTIC MATERIALS
FOR VEHICLE CONSTRUCTION

UNBELIEVABLE VARIETY FROM A SINGLE SOURCE

Our materials make a truly positive impression – embossed or smooth, opaque, translucent or transparent – ranging from high-gloss to extra-matt. Special surfaces such as soft touch, wood look, carbon or metallic effect are also available. All our materials provide convincing qualities, no matter whether they are on view or concealed. They are lightweight, impact resistant, corrosion resistant and easy to process.

Our portfolio's distinctive feature – everything comes from a single source.

Thanks to our diversified range, we can offer you unique and perfectly coordinated products. Our aim is to ensure swift delivery of innovative, high-quality products to suit your needs. Our aluminium composite panels, lightweight foamboards or cast, extruded and co-extruded plastic panels are all adapted to interior and exterior applications in vehicle construction: vehicle cladding and structural parts, covers or casings, roof/side windows, furniture or even in wet rooms.

Robust lightweights: Our aluminium composite panels include outstanding benefits by offering very high flexural strength and extremely low weight; our plastic sheets are characterised by excellent processing properties, e.g. for vacuum forming. The extensive range includes everything from “difficult-to-ignite” sheet materials to high UV-resistance and easy to form products.

Another positive feature provided by our products is their compelling visual appeal: we fulfil customer-specific colour requests with the highest colour consistency at our in-house laboratories. Our databases already include over 20.000 different colours. Thanks to our in-house masterbatch production and colour compounds, we can provide a direct supply of colour-matched granules for your injection moulding applications.

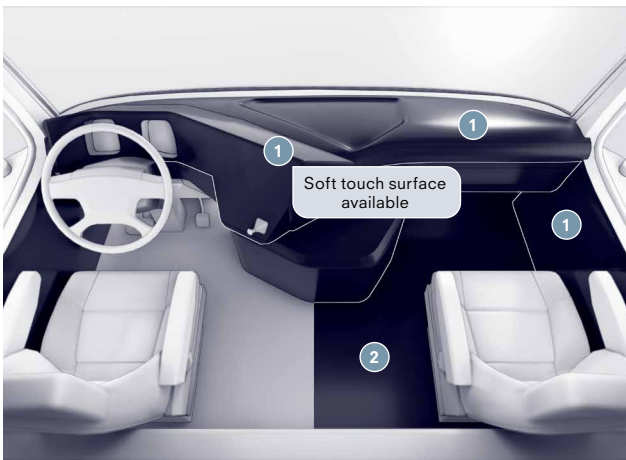
There is really no need for us to go into the many advantages lightweight materials provide in vehicle construction. We are proud that our materials are contributing to a reduction in CO₂ emissions. Environmental protection is, of course, a topic close to our hearts – we are committed to environmentally sound manufacturing processes and sustainable materials.

We use our extensive experience and expertise to help our customers make the best possible decisions and to provide bespoke solutions. On the following pages, we would like to give you a first impression of our portfolio's wide range of applications. This brochure includes information on vehicle construction applications and also an overview of our products and their properties.

For further information, please do not hesitate to contact us.

TRANSPORT VEHICLES

HGV



1 | Cabin cladding parts

ATHLONExtrusions® ABS
ATHLONExtrusions® PMMA/ABS
ATHLONExtrusions® TPU/ABS

2 | Substructure floor

ALUCORE® (ACM)

3 | Front cladding

ATHLONExtrusions® PMMA/ABS
ATHLONExtrusions® PC-ABS
ATHLONExtrusions® ASA/ABS
ATHLONExtrusions® PP+

4 | Sun visor

CRYLON® (PMMA XT)

5 | Roof window

CRYLON® (PMMA XT)

6 | Aerodynamic parts/spoilers

ATHLONExtrusions® PMMA/ABS
ATHLONExtrusions® PC-ABS
ATHLONExtrusions® ASA/ABS
ATHLONExtrusions® PP+

7 | Inspection flap

ATHLONExtrusions® PMMA/ABS
ATHLONExtrusions® ASA/ABS
ATHLONExtrusions® PP+
ALUCOBOND® (ACM)

8 | Wheel cover/mudguard

ATHLONExtrusions® PP+

9 | Transport box

ALUCORE® (ACM)
ALUCOBOND® (ACM)
HYLITE® (ACM)

10 | Side flap

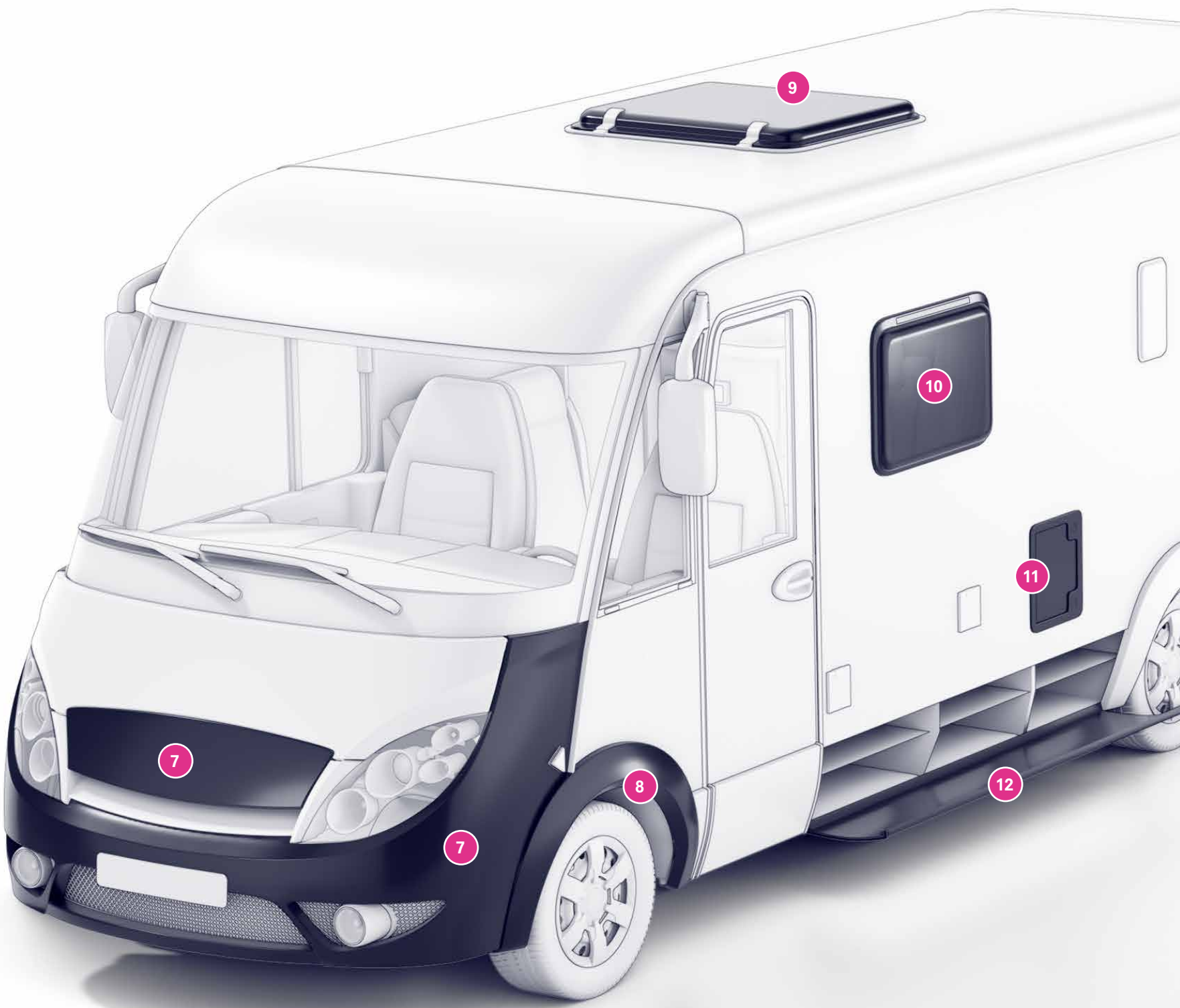
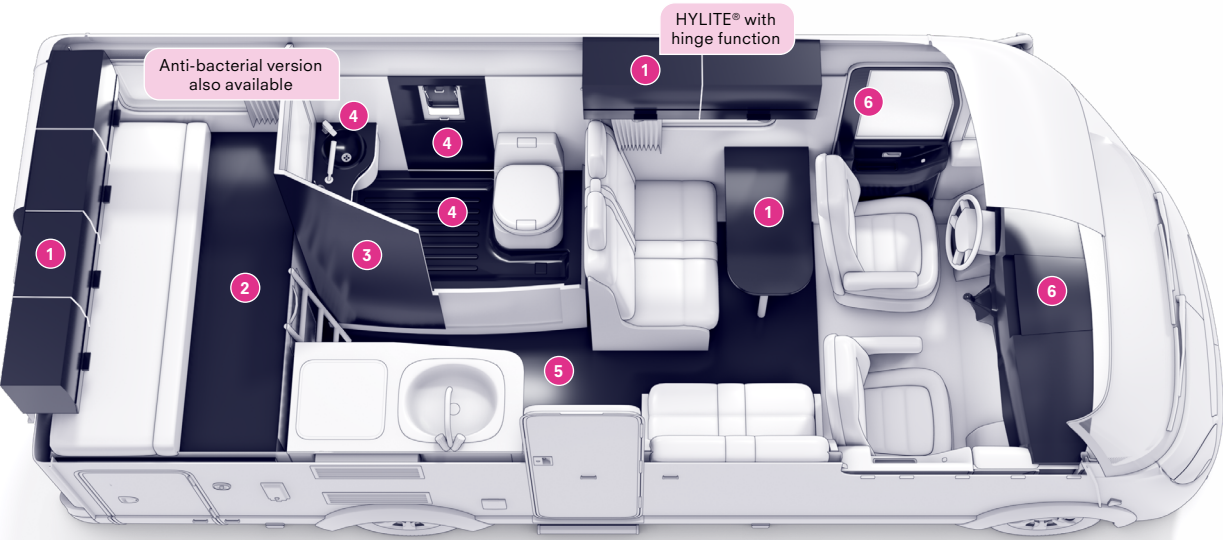
ALUCORE® (ACM)

11 | Rear door

ALUCORE® (ACM)

RECREATION

CARAVAN



1 | Furniture
 ATHLONExtrusions® ABS
 ALUCORE® (ACM)
 ALUCOBOND® (ACM)
 HYLITE® (ACM)
 KAPA®tech (ACM)
 KAPA®inlay (Foamboard)

2 | Substructure sleeping area
 ALUCORE® (ACM)

3 | Interior cladding parts
 ATHLONExtrusions® ABS
 ATHLONExtrusions® PMMA/ABS
 ALUCORE® (ACM)
 ALUCOBOND® (ACM)
 HYLITE® (ACM)

4 | Wet room
 ATHLONExtrusions® ABS
 ATHLONExtrusions® PMMA/ABS
 ATHLONExtrusions® HIPS
 POLYCASA® HIPS
 ALUCOBOND® (ACM)

5 | Substructure floor
 ALUCORE® (ACM)

6 | Cladding parts
 ATHLONExtrusions® ABS
 ATHLONExtrusions® PMMA/ABS
 ATHLONExtrusions® TPU/ABS

7 | Front cladding
 ATHLONExtrusions® PMMA/ABS
 ATHLONExtrusions® PC-ABS
 ATHLONExtrusions® ASA/ABS
 ATHLONExtrusions® PP+

8 | Wheel cover/mudguard
 ATHLONExtrusions® PP+

9 | Roof window
 CRYLON® (PMMA XT)
 LUCRYL® (PMMA Resin)

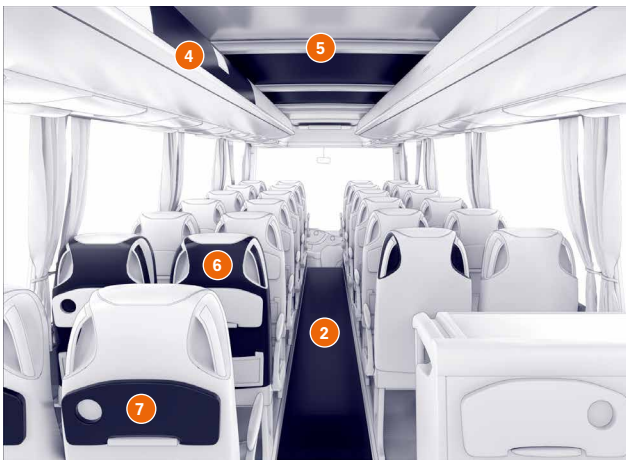
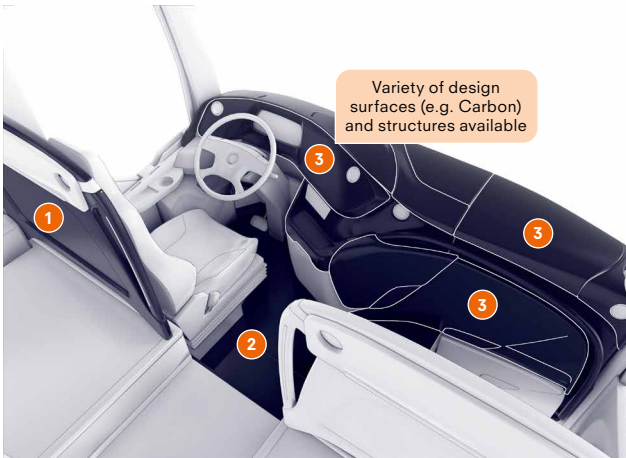
10 | Side window
 CRYLON® (PMMA XT)

11 | Inspection flap
 ATHLONExtrusions® PMMA/ABS
 ATHLONExtrusions® PP+
 ALUCOBOND® (ACM)

12 | Side flap
 ATHLONExtrusions® PMMA/ABS
 ATHLONExtrusions® PC-ABS
 ATHLONExtrusions® ASA/ABS
 ATHLONExtrusions® PP+
 ALUCOBOND® (ACM)

PASSENGER TRANSPORT

TOUR BUS



1 | Seat panel
ATHLONExtrusions® ABS
ATHLONExtrusions® PC-ABS
ALUCOBOND® (ACM)
HYLITE® (ACM)

2 | Substructure floor
ALUCORE® (ACM)

3 | Cabin cladding
ATHLONExtrusions® ABS
ATHLONExtrusions® PMMA/ABS
ATHLONExtrusions® PC-ABS
ATHLONExtrusions® TPU/ABS

4 | Luggage compartments
ATHLONExtrusions® ABS
ATHLONExtrusions® PC-ABS
ALUCORE® (ACM)
ALUCOBOND® (ACM)
HYLITE® (ACM)

5 | Ceiling cladding
ATHLONExtrusions® ABS
ATHLONExtrusions® PC-ABS
ALUCORE® (ACM)
ALUCOBOND® (ACM)
HYLITE® (ACM)

6 | Seat shell
ATHLONExtrusions® ABS
ATHLONExtrusions® PC-ABS

7 | Tables
ATHLONExtrusions® ABS
ALUCORE® (ACM)
ALUCOBOND® (ACM)

8 | Luggage box
ATHLONExtrusions® PMMA/ABS
ALUCORE® (ACM)
ALUCOBOND® (ACM)

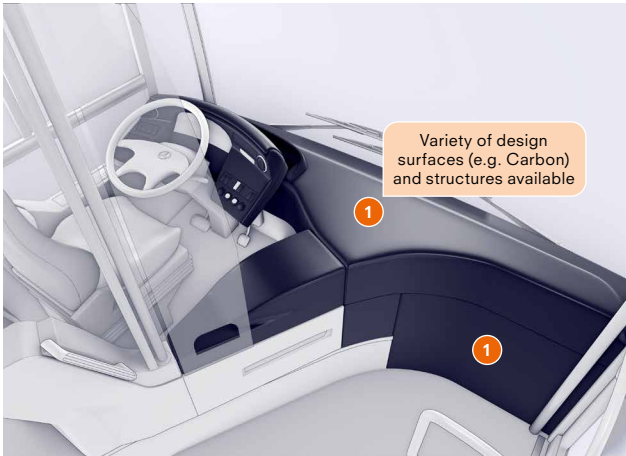
9 | Front cladding
ATHLONExtrusions® PMMA/ABS
ATHLONExtrusions® ASA/ABS
ATHLONExtrusions® PP+

10 | Side cladding
ALUCORE® (ACM)
ALUCOBOND® (ACM)

11 | Side luggage compartment flap
ALUCORE® (ACM)
ALUCOBOND® (ACM)

PASSENGER TRANSPORT

BUS



1 | Cabin cladding parts

ATHLONExtrusions® ABS
ATHLONExtrusions® PMMA/ABS
ATHLONExtrusions® PC-ABS
ATHLONExtrusions® TPU/ABS

2 | Ceiling cladding

ATHLONExtrusions® ABS
ATHLONExtrusions® PC-ABS
ALUCORE® (ACM)
ALUCOBOND® (ACM)
HYLITE® (ACM)

3 | Ventilation ducts/Electrics covering

ATHLONExtrusions® ABS
ATHLONExtrusions® PC-ABS
ALUCOBOND® (ACM)

4 | Partitions

CRYLON® (PMMA XT)
IMPEX® (PC)
ALUCOBOND® (ACM)
HYLITE® (ACM)

5 | Substructure floor

ALUCORE® (ACM)

6 | Front cladding

ATHLONExtrusions® PMMA/ABS
ATHLONExtrusions® PC-ABS
ATHLONExtrusions® ASA/ABS
ATHLONExtrusions® PP+

7 | Air conditioning unit cover

ATHLONExtrusions® PMMA/ABS
ATHLONExtrusions® PC-ABS
ATHLONExtrusions® ASA/ABS

8 | Roof window

CRYLON® (PMMA XT)

9 | Side cladding

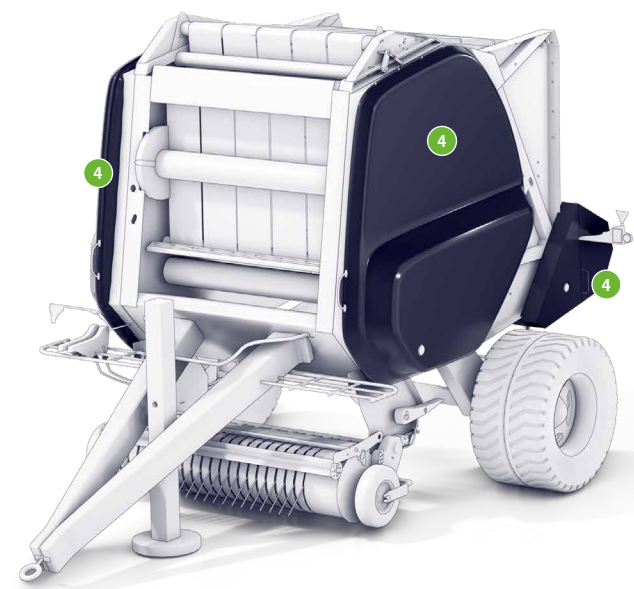
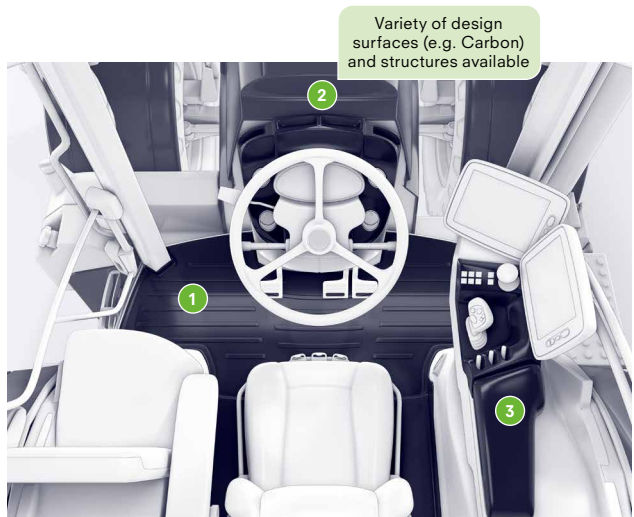
ALUCORE® (ACM)
ALUCOBOND® (ACM)

10 | Ramp

ALUCORE® (ACM)

AGRICULTURAL VEHICLES

TRACTOR



1 | Substructure floor
ALUCORE® (ACM)

2 | Cabin cladding parts
ATHLONExtrusions® ABS
ATHLONExtrusions® PMMA/ABS
ATHLONExtrusions® TPU/ABS

3 | Console cladding
ATHLONExtrusions® ABS

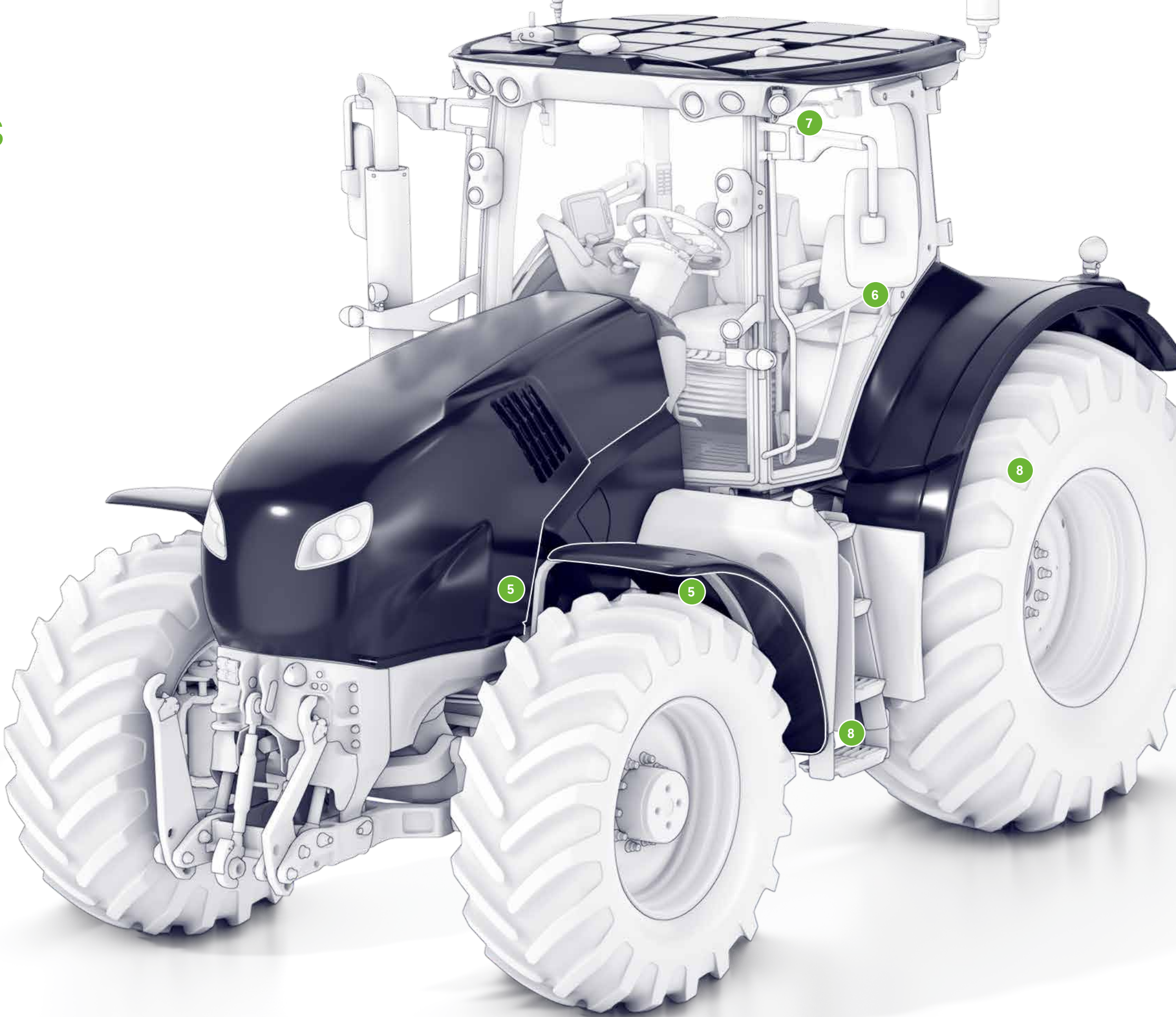
4 | Trailer cladding parts
ATHLONExtrusions® PMMA/ABS
ATHLONExtrusions® ASA/ABS
ATHLONExtrusions® PP+

5 | Cladding parts
ATHLONExtrusions® PMMA/ABS
ATHLONExtrusions® PC-ABS
ATHLONExtrusions® ASA/ABS
ATHLONExtrusions® PP+
ALUCOBOND® (ACM)

6 | Side window
IMPEX® (PC)

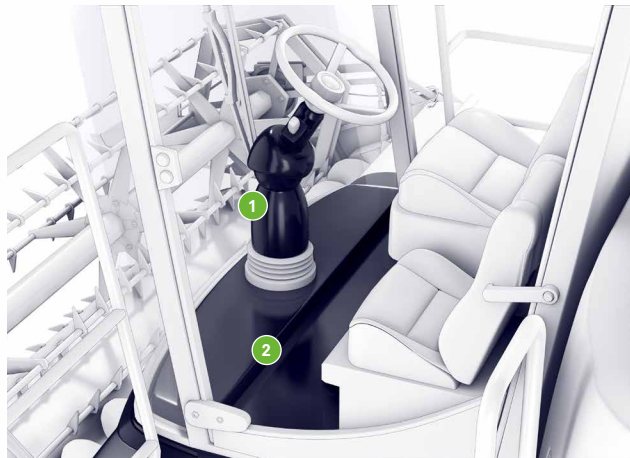
7 | Roof panel
ATHLONExtrusions® PMMA/ABS
ATHLONExtrusions® PC-ABS
ATHLONExtrusions® PP+

8 | Wheel cover/mudguard
ATHLONExtrusions® PP+



AGRICULTURAL VEHICLES

COMBINE HARVESTER



1 | Console cladding
ATHLONExtrusions® ABS

2 | Substructure floor
ALUCORE® (ACM)

3 | Cladding parts
ATHLONExtrusions® PMMA/ABS
ATHLONExtrusions® PP+

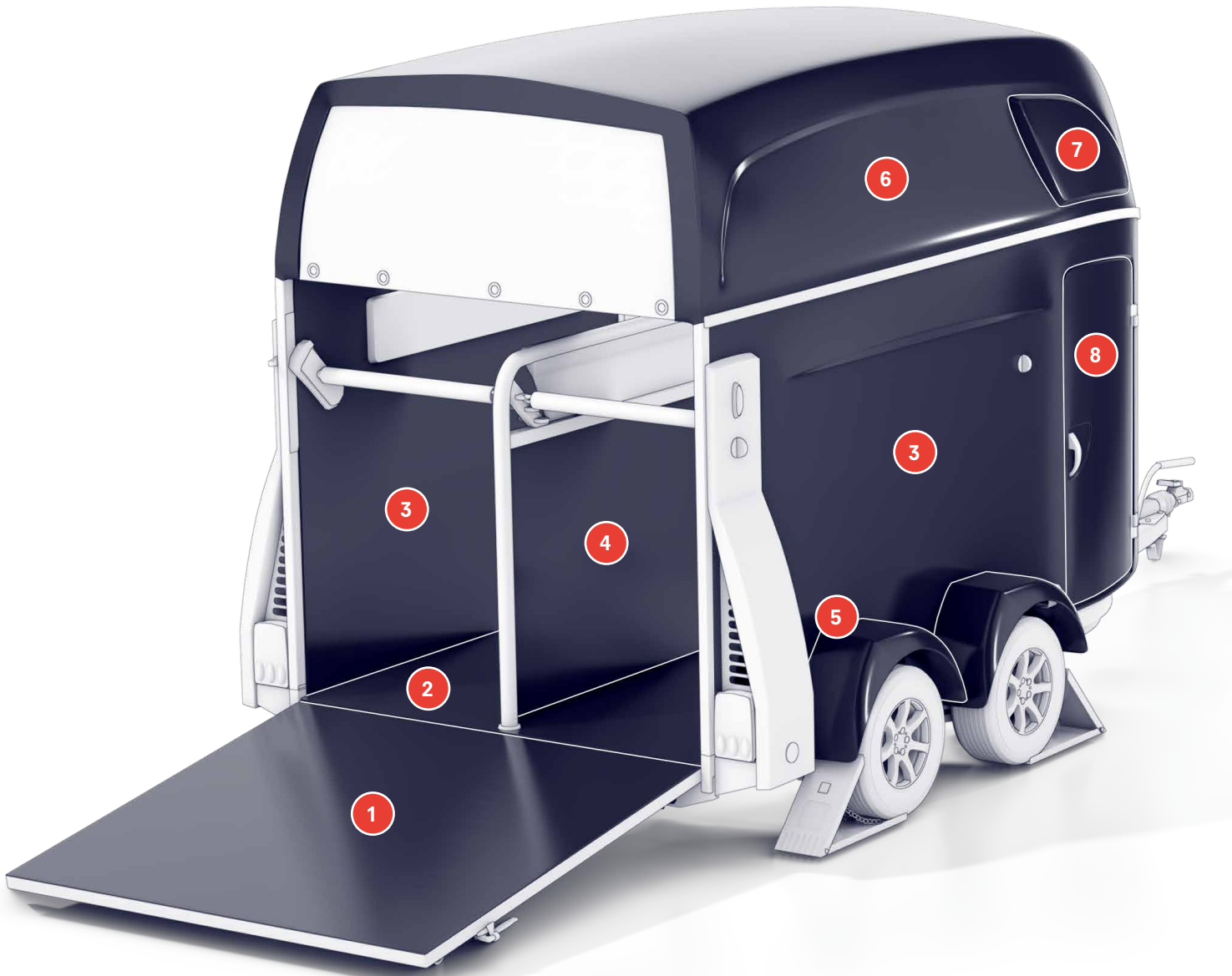
4 | Roof panel
ATHLONExtrusions® PMMA/ABS
ATHLONExtrusions® PC-ABS
ATHLONExtrusions® PP+

5 | Side window
IMPEX® (PC)

6 | Side cladding
ATHLONExtrusions® PMMA/ABS
ATHLONExtrusions® PC-ABS
ATHLONExtrusions® ASA/ABS
ATHLONExtrusions® PP+
ALUCOBOND® (ACM)

TRAILER

HORSE BOX TRAILER



1 | Ramp
ALUCORE® (ACM)

2 | Substructure floor
ALUCORE® (ACM)

3 | Side cladding
ATHLONExtrusions® ABS
ATHLONExtrusions® PMMA/ABS
ATHLONExtrusions® PC-ABS
ATHLONExtrusions® PP+
ALUCORE® (ACM)
ALUCOBOND® (ACM)

4 | Partition
ALUCORE® (ACM)
ALUCOBOND® (ACM)

5 | Wheel cover/mudguard
ATHLONExtrusions® PP+

6 | Roof structure
ATHLONExtrusions® PMMA/ABS
ATHLONExtrusions® ASA/ABS
ATHLONExtrusions® PC-ABS
ATHLONExtrusions® PP+

7 | Window
CRYLON® (PMMA XT)
IMPEX® (PC)

8 | Side doors
ATHLONExtrusions® PMMA/ABS
ATHLONExtrusions® PC-ABS
ATHLONExtrusions® ASA/ABS
ATHLONExtrusions® PP+
ALUCORE® (ACM)
ALUCOBOND® (ACM)

INDUSTRIAL VEHICLES

FORK LIFT TRUCK



1 | Cabin cladding
ATHLONExtrusions® ABS
ATHLONExtrusions® PMMA/ABS

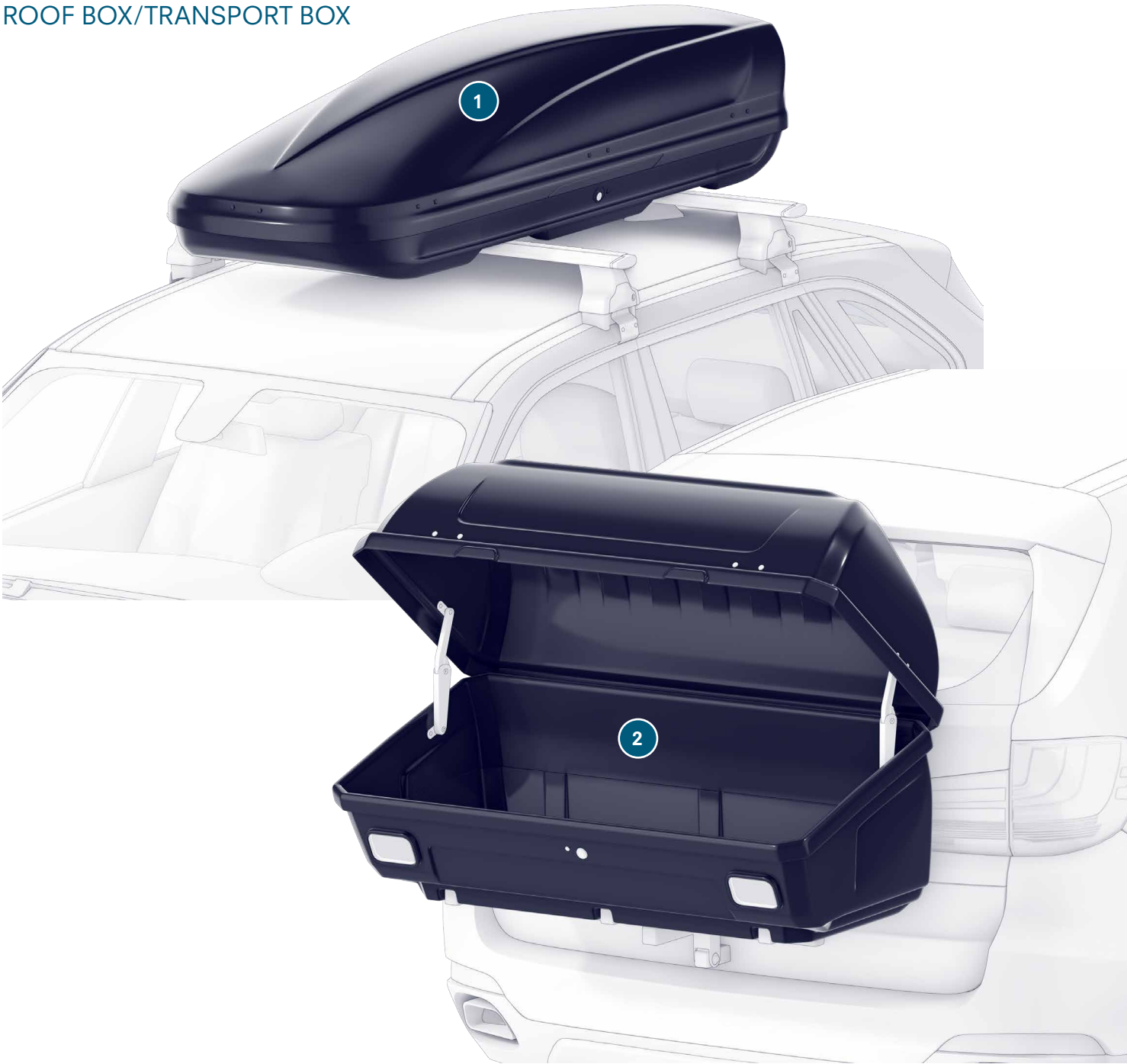
2 | Cladding parts
ATHLONExtrusions® PMMA/ABS
ATHLONExtrusions® PP+

3 | Wheel cover/mudguard
ATHLONExtrusions® PP+

4 | Side cladding
ATHLONExtrusions® PMMA/ABS
ATHLONExtrusions® PC-ABS
ATHLONExtrusions® ASA/ABS
ATHLONExtrusions® PP+
ALUCOBOND® (ACM)

EQUIPMENT

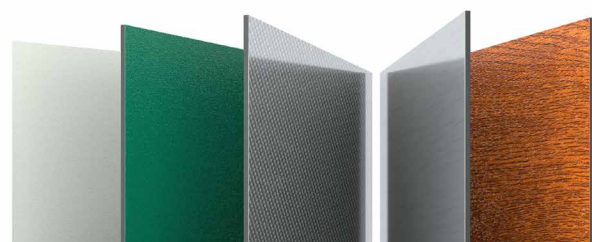
ROOF BOX/TRANSPORT BOX



1 | Roof box
ATHLONExtrusions® PMMA/ABS
ATHLONExtrusions® ASA/ABS
ATHLONExtrusions® PP+

2 | Transport box
ATHLONExtrusions® PMMA/ABS
ATHLONExtrusions® ASA/ABS
ATHLONExtrusions® PP+

PRODUCT OVERVIEW



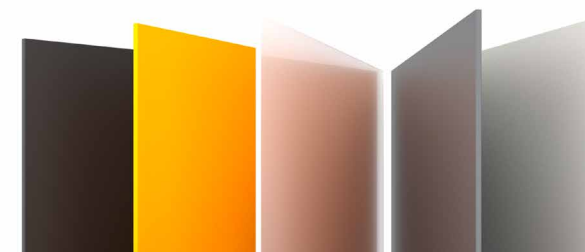
ROBUST AND INDIVIDUAL.

ATHLONExtrusions® ABS

Very versatile thermoplastic composite sheet.

Thicknesses: 1.5 – 8 mm

- Superior impact strength
- Robust and durable
- Wide choice of different colours, surfaces and textures
- Easy processing
- Wide thermoforming temperature range
- Very wide range of grades available to suit a multitude of applications



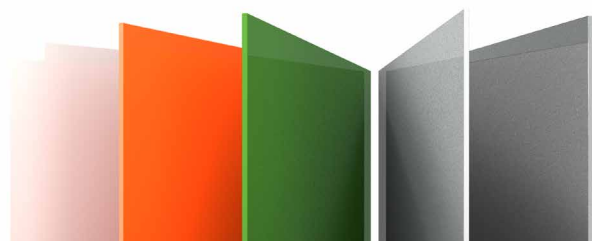
VERSATILE MATERIAL – AVAILABLE IN ROLL FORM OR AS SHEETS.

ATHLONExtrusions® HIPS

Versatile, economical, solid thermoplastic.

Thicknesses: 1 – 6 mm

- Easy processing in flat sheet and thermoforming applications
- Available in an infinite range of opaque colours including special effects
- Can be extruded in gloss or matt
- Also available in a variety of matt finish surface textures



MULTI-LAYER WITH AN EXCELLENT SURFACE FINISH.

ATHLONExtrusions® PMMA/ABS

Multi-layer, combination of PMMA co-extruded on high impact ABS.

Thicknesses: 1.5 – 10 mm | Furniture quality 0.7 – 2 mm

- Excellent A-face finish in a range of matt levels
- Good scratch resistance
- Improved chemical resistance
- Outstanding UV stability
- Extremely wide variety of colours including metallic and special effects
- Easy processing during thermoforming



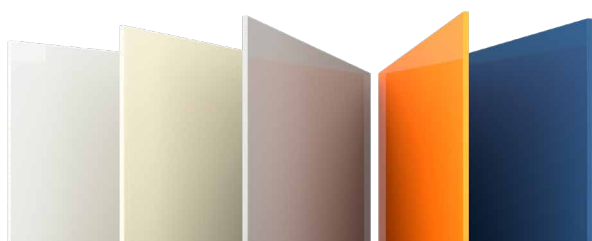
HEAT RESISTANT AND EXTREMELY HIGH IMPACT STRENGTH.

ATHLONExtrusions® PP+

Talc-filled, extremely high impact strength styrene.

Thicknesses: 2 – 5 mm | 2 – 6 mm with surface texture

- Similar vacuum-forming characteristics to styrene materials, with fast cycle times, a relatively wide moulding temperature window and low post moulding shrinkage rates in comparison to alternative polyolefins
- Existing tooling designed for styrene materials can generally be used for ATHLONExtrusions® PP+



VERSATILE MULTI-LAYER ENGINEERING PLASTIC.

ATHLONExtrusions® PC-ABS

Engineering thermoplastic material made of polycarbonate and ABS with excellent impact strength, with high temperature resistance and excellent chemical resistance.

Thicknesses: 1 – 10 mm

- Very high impact strength
- Excellent rigidity
- Outstanding temperature resistance



EXTRUDED ACRYLIC IN BRILLIANT CLARITY.

CRYLON®

Large-format, extruded acrylic glass sheets featuring outstanding clarity.

Thicknesses: 1 – 25 mm

- First-rate optical characteristics
- Excellent colour rendering
- Varying degrees of transparency
- Very good level of resistance to weathering and ageing
- Solutions for a variety of indoor and outdoor applications



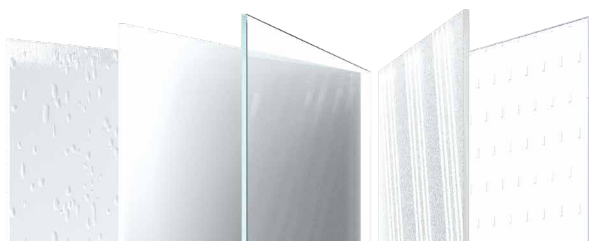
FLAWLESSLY EXTRUDED A-PET AND PET-G THERMOPLASTIC POLYESTER SHEETS.

HIPEX®

Flawlessly extruded A-PET and PET-G thermoplastic polyester sheets.

Thicknesses: HIPEX® A 0.5 – 6 mm, HIPEX® G 0.5 – 20 mm

- Extremely impact resistant
- High transparency
- Fire rated “difficult-to-ignite” in accordance with EN 13501-1: B-s1, d0
- Interior and exterior applications
- We recommend versions featuring UV- protection for exterior use
- Ideal formability
- HIPEX® A ideally suited to flat and arched applications
- HIPEX® G suited to complex thermoforming



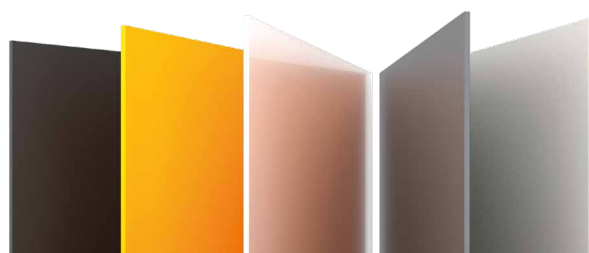
VERSATILE, EFFECTIVE, ATTRACTIVE.

POLYCASA® PS

Extruded crystal polystyrene sheets with good resistance to chemicals and high stability.

Thicknesses: 0.85 – 5 mm

- Numerous colours and designs available especially for shower cabin manufacture
- Versatile material for sanitary equipment and also for interior glazing and lighting



ENHANCED IMPACT RESISTANCE.
EASY TO CUT AND FORM.

POLYCASA® HIPS

Rubber modified polystyrene sheet.

Thicknesses: 0.5 – 10 mm

- Improved impact strength
- Easy processing
- Available with matt finish on both sides or in matt/glossy versions
- Very good electrical insulating properties
- Excellent printability
- Suitable for thermoforming



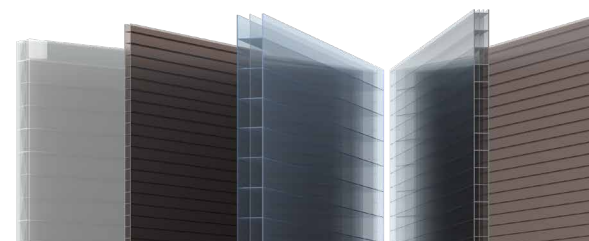
EXTRUDED POLYCARBONATE SHEETS WITH EXCELLENT IMPACT STRENGTH.

IMPEX®

Large-format, virtually unbreakable extruded polycarbonate sheets.

Thicknesses: 1 – 20 mm

- Excellent optical and mechanical properties
- Variety of different surfaces
- Very high impact strength
- Interior and exterior applications
- IMPEX® HC version, with abrasion resistant coating on one or both sides, especially suitable for flat applications – less sensitive to scratches and higher resistance to many chemicals and solvents



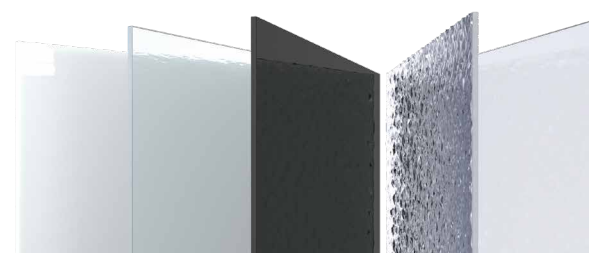
EXTRUDED MULTIWALL POLYCARBONATE SHEETS WITH HIGH IMPACT RESISTANCE.

IMPEX® MULTIWALL

Extruded, multiwall, virtually unbreakable polycarbonate sheets with outstanding resistance to weathering.

Thicknesses: 4 – 25 mm

- Lightweight
- Outstanding optical properties
- High impact strength
- Very good weather resistance
- Cold and hot insulation properties
- Interior and exterior applications
- Different profile designs



LIGHTER, BUT STIFFER.

POLYCASA® SAN

Extruded Styrene Acrylonitrile (SAN) copolymer sheets with good optical properties and glossy surface.

Thicknesses: 1.5 – 6 mm

- Interior and exterior applications
- We recommend versions with UV- protection for exterior use
- Special characteristics distinguishing it from conventional transparent materials: Reduced weight, considerably more rigid, outstanding resistance to water and chemical absorption
- Ideally suitable for glazing industrial doors: low weight, UV-resistant



THE HONEYCOMB PANEL AMONGST ALUMINIUM COMPOSITE PANELS.

ALUCORE®

Aluminium composite panel consisting of two cover sheets and an aluminium honeycomb core.

Thicknesses: 6 – 25 mm

- Rigidity
- Very lightweight
- Excellent flatness
- Formability
- Wide range of formats and thicknesses
- Easy processing
- Optimum strength values



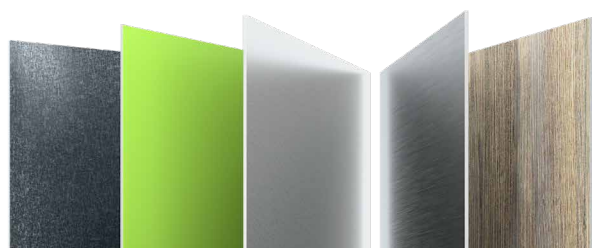
INNOVATIVE PRODUCT WITH UNIQUE PROPERTIES: LIGHTWEIGHT – STRONG – FIRE RATED.

KAPA®tech

Innovative lightweight foamboard with polyurethane foam core and aluminium cover layers.

Thicknesses: 5/10 mm

- Lightweight
- Rigid
- Core is weather-resistant and resistant to humidity
- Interior and exterior applications
- “Difficult-to-ignite” in accordance with EN 13501-1: B-s2, d0



THE ORIGINAL ALUMINIUM COMPOSITE PANEL.

ALUCOBOND®

Aluminium composite panels consisting of two aluminium cover sheets and various core materials.

Thicknesses: 3/4/6 mm

- Good formability
- Flatness
- Stability
- Weather resistance
- Impressive weight to stiffness ratio, even for large format panels
- Extensive range of different surface finishes



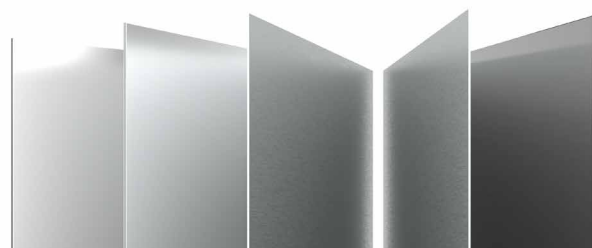
SOPHISTICATED TECHNOLOGY.

KAPA®inlay

Lightweight foamboard with a closed-cell polyurethane foam core and both-sides polyester non-woven composite surface layers.

Thicknesses: 3 – 20 mm

- Carrier plate for an extensive range of coatings
- Easy to handle due to low weight
- Significant weight reduction in comparison to plywood and MDF
- Good dimensional stability
- Reduced amount of adhesive required thanks to the closed surface
- Moisture and temperature-resistant
- Solvent resistant and chemically inert



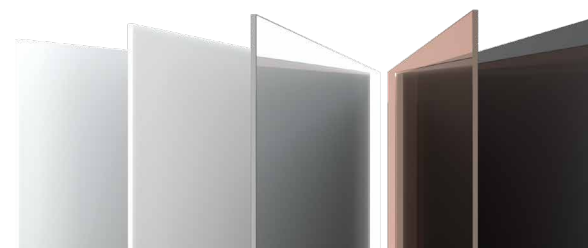
VERY THIN AND EXTREMELY FLEXIBLE.

HYLITE®

Aluminium composite sheet with a polypropylene core and aluminium cover sheets.

Thicknesses: 1.2/2 mm

- Thinnest of all composite panels
- Core material features a special hinge function (withstands repeated bending without damage)
- High temperature resistance



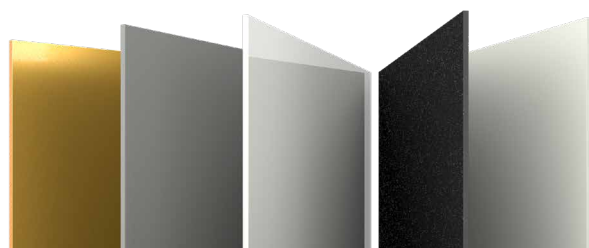
A CLEAR CHOICE.

LUMEX®

Transparent extruded A-PET and PET-G thermoplastic polyester sheets.

Thicknesses: LUMEX® A 0.5 – 6 mm, LUMEX® G 0.5 – 10 mm

- High impact strength
- Good outdoor durability with version featuring UV protection
- Light weight and speedy processing
- “Difficult-to-ignite” in accordance with EN 13501-1: B-s1, d0
- Suitable for applications in the foodstuffs sector
- LUMEX®A (A-PET) especially suitable for cold bending, LUMEX®G (PET-G) for vacuum and thermoforming



THE ULTIMATE BLEND OF BEAUTY
AND STRENGTH.

ASTERITE® AS

High performance, top-quality cast acrylic
glass sheet material.

Thicknesses: 3.2 – 12 mm

- Ideal for the manufacture of high quality sanitary equipment
- Especially developed for first-rate thermoforming
- Aesthetic and hardwearing
- Excellent processing and surface qualities
- Almost every colour can be matched



HIGH QUALITY LIQUID ACRYLIC
RESIN.

ASTERITE® LAR

Liquid Acrylic Resin (LAR)

- Production of moulded articles such as solid surface, engineered stone and cast embedments
- Especially designed for the manufacture of solid surface sheets and premium shaped articles
- Designed to be durable
- Extremely robust, resistant to UV light and chemicals



PMMA RESIN: HIGH RIGIDITY,
VISCOSITY AND IMPACT STRENGTH.

LUCRYL®

PMMA Resin

- Available in many opaque and transparent colours
- Excellent level of transparency and brilliance
- Good surface hardness
- High scratch resistance
- Good resistance to weathering
- Suitable for extrusion and injection moulding

SERVICE

WIDE RANGE OF COLOURS



Colour matching

- Library of over 20.000 colours across our sites
- Short lead time on colour matches
- UV resistance



Colour lab

- State of the art colour spectrometers
- FTIR Microscope for the polymer analysis
- Ability to analyse and identify various contaminants in plastic sheets
- Ability to identify multi-layer sheets and films



Masterbatch

- In-house colour compounding

EXTRAS



In-house coating

- In-house hard coating
- Increased abrasion resistance
- Less sensitive against scratches
- Good impact resistance
- High resistance to many chemicals and solvents



Cut-to-size

- Tight tolerances
- Secure supply chain



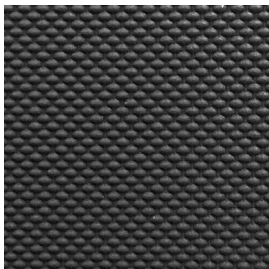
Technical Service

- Project support
- Mock-Ups
- Training
- Workshops

TEXTURES

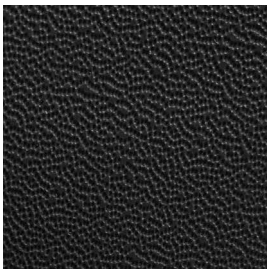
OUR ATHLONExtrusions® PRODUCT RANGE OFFERS NUMEROUS TEXTURES.

Connect



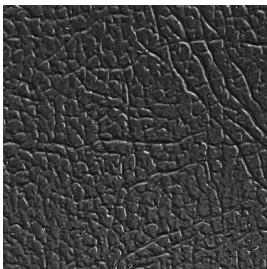
available for
ATHLONExtrusions®
ABS | PMMA/ABS | ASA/ABS | HIPS

Pinseal



available for
ATHLONExtrusions®
ABS | PMMA/ABS | ASA/ABS | HIPS | PP+

Leathergrain



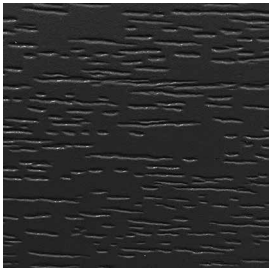
available for
ATHLONExtrusions®
ABS | PMMA/ABS | ASA/ABS | HIPS | PP+

Sahara



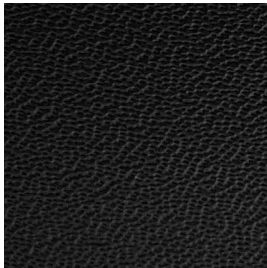
available for
ATHLONExtrusions®
ABS | PMMA/ABS | ASA/ABS | HIPS | PP+

Woodtick



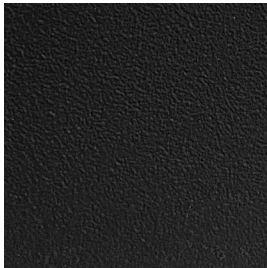
available for
ATHLONExtrusions®
ABS | PMMA/ABS | ASA/ABS

Deepseal



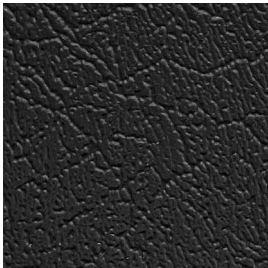
available for
ATHLONExtrusions®
ABS | PMMA/ABS | ASA/ABS | HIPS

Sandstone



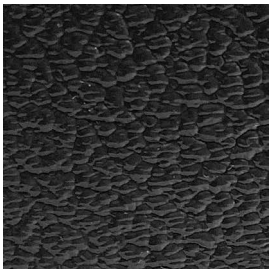
available for
ATHLONExtrusions®
ABS | PMMA/ABS | ASA/ABS | HIPS

Volvo



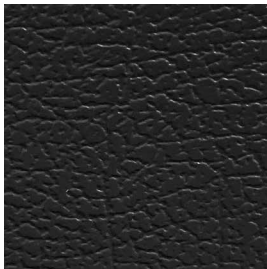
available for
ATHLONExtrusions®
ABS | PMMA/ABS | ASA/ABS

Texas



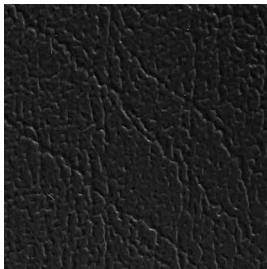
available for
ATHLONExtrusions®
ABS | PMMA/ABS | ASA/ABS

Cordwain



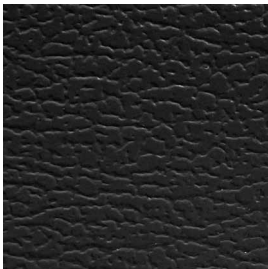
available for
ATHLONExtrusions®
ABS | PMMA/ABS | ASA/ABS | PP+

Rhino



available for
ATHLONExtrusions®
ABS | PMMA/ABS | ASA/ABS | HIPS

Roebuck



available for
ATHLONExtrusions®
ABS | PMMA/ABS | ASA/ABS

As printed textures may vary from the actual product, please request a sample.

ABOUT US

3A Composites Transport & Industry Europe is an international division of the 3A Composites Group and part of Schweiter Technologies AG. We are the leading manufacturer, along with Athlone Extrusions Ltd., the Polycasa Group and Perspex International Ltd., for plastic sheets and resin, aluminium composite materials and lightweight foamboards for the fields of agricultural and commercial vehicles, caravans, sanitary ware, furniture construction, shipbuilding and the rail vehicle construction industry.

Our goal is to ensure the prompt supply of innovative, top-quality products which are tailored to our customers' needs.

BOUNDLESS POSSIBILITIES FOR TRANSPORT AND INDUSTRY APPLICATIONS.

SCHWEITER TECHNOLOGIES



3A COMPOSITES AMERICAS	3A COMPOSITES EUROPE	3A COMPOSITES ASIA PACIFIC	3A COMPOSITES CORE MATERIALS	3A COMPOSITES MOBILITY
	TRANSPORT & INDUSTRY			
	DISPLAY			
	ARCHITECTURE			

If you require further information, are interested in talking to an 3A Composites expert or would like to request a sample, please feel free to contact us: www.transport-industry.com/contact

OUR SITES ACROSS EUROPE





3A Composites GmbH
Alusingenplatz 1
78224 Singen
Germany
www.transport-industry.com