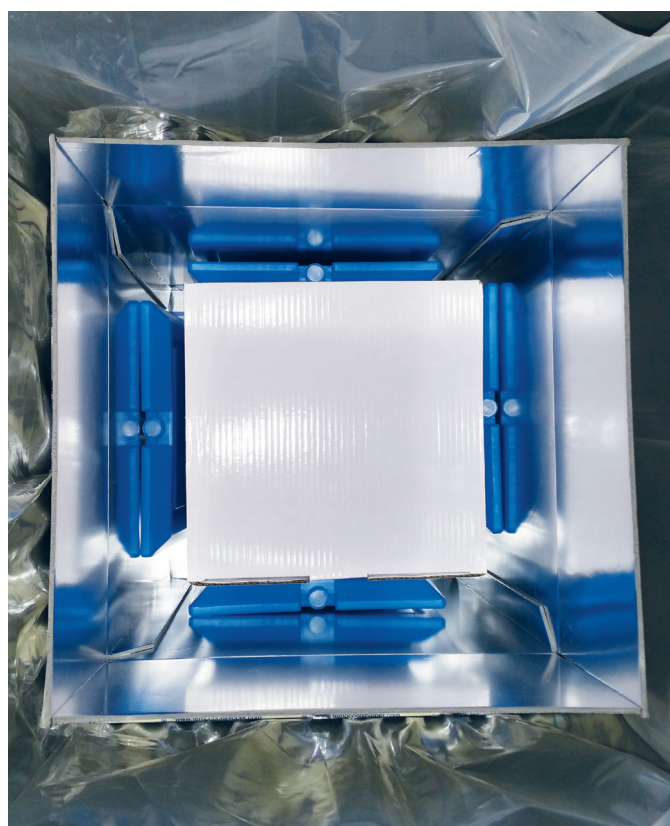
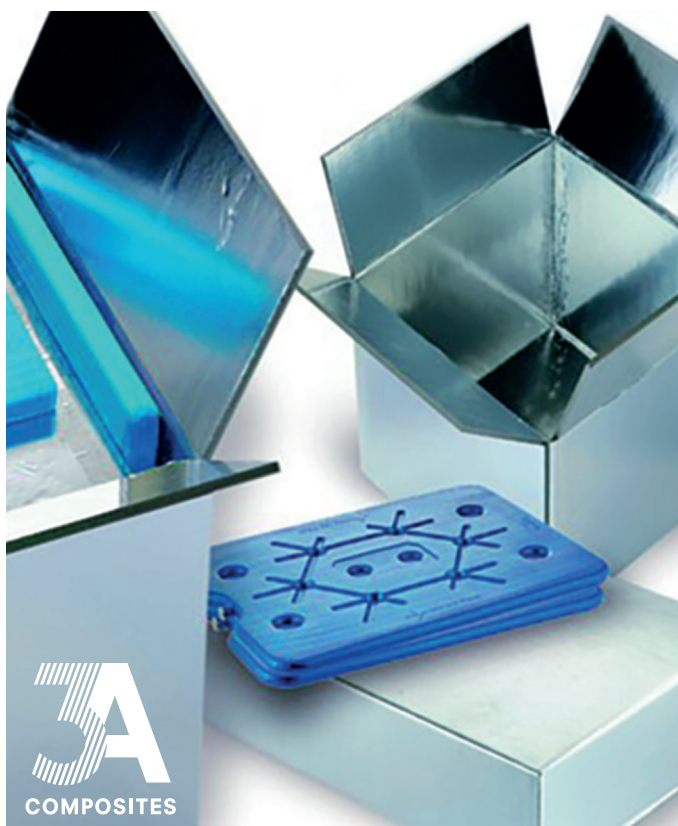
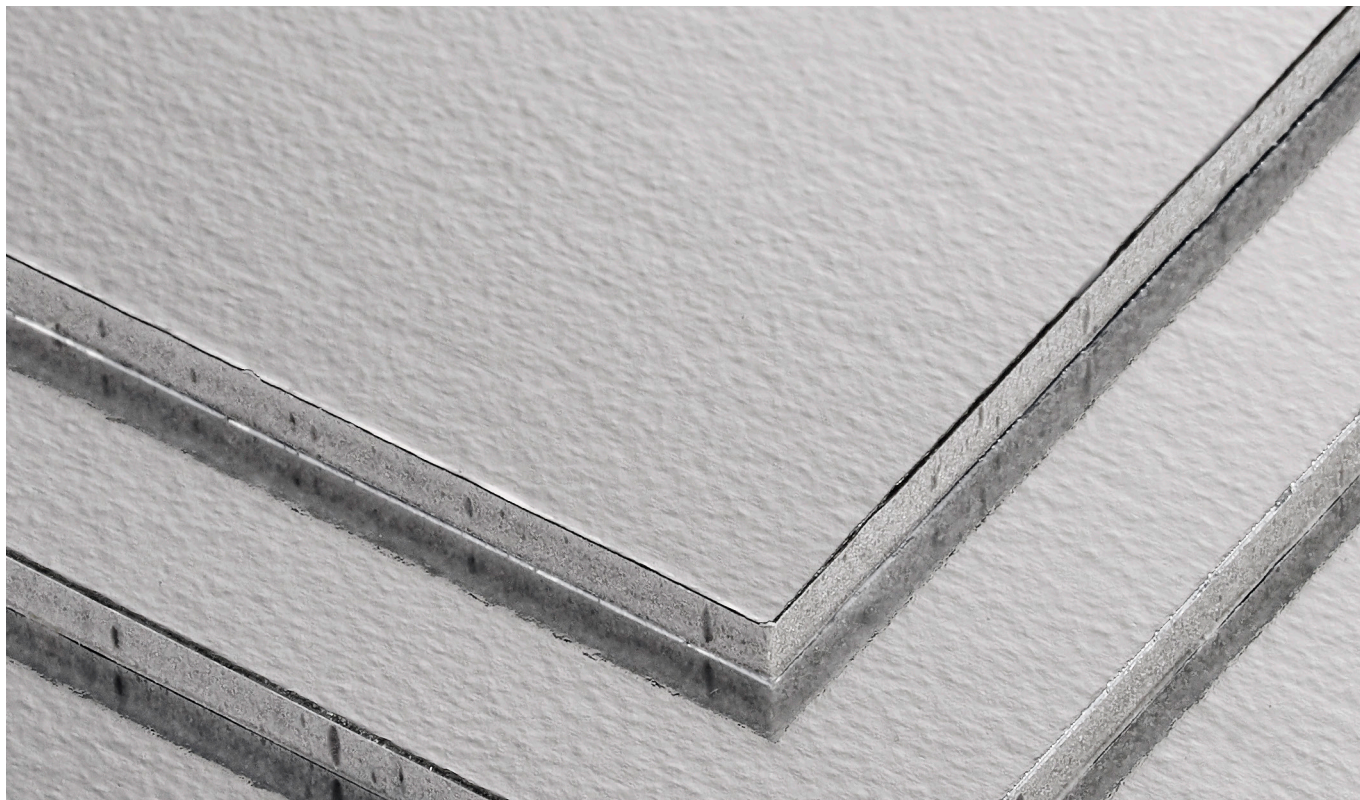
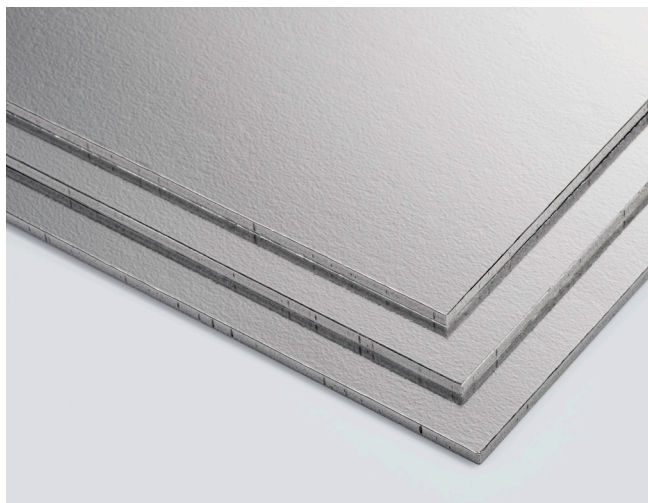


AT A GLANCE

Lightweight foamboard with a polyurethane foam core and both-sides metallised composite film.





PRODUCT

- Lightweight foamboard with a polyurethane foam core and both-sides metallised composite film
- Excellent insulating properties (insulation for up to 24 hours)
- Heat reflective surface
- Very good physical and mechanical properties
- Waterproof and resistant to temperature
- Not moisture sensitive
- Space-saving storage solutions for the parts (die-cuts)

APPLICATIONS

- For die cut, transport packaging in a variety of formats, with exceptional insulation properties e.g. pharmaceutical or foodstuff industry

PROCESSING OPTIONS

- Easy processing with knife or blade
- Can be processed with conventional woodworking techniques on standard machines
- Use of solvent-based adhesives and hot-melts – especially single-component adhesives based on polyurethane

DELIVERY PROGRAMME

- Available in customized formats up to max. 1520 mm x 3050 mm
- Other thicknesses are available on request
- Delivery on pallet

Property	Unit	Method	KAPA [®] iso	
Thickness	mm		3.5	6
Tolerance			± 0.6	
Density (core)	kg/m ³	DIN EN ISO 845	40	
Tolerance			± 5	
Weight per unit area	g/m ²	DIN EN 29073-1	~ 230	~ 330
Compressive strength (10% compression set)	N/mm ²	DIN EN ISO 844	> 0.1	> 0.2
Memory effect (10% compression set)	%	DIN EN ISO 844	~ 95	
Closed cell structure	%		> 95	
Fire behaviour		DIN 4102	B3	
Thermal conductivity	W/mK	DIN 4108-4	< 0.030	

More information at: www.transport-industry.com

All data provided here is based on our current knowledge and experience. This data is not legally binding and is for information purposes only.