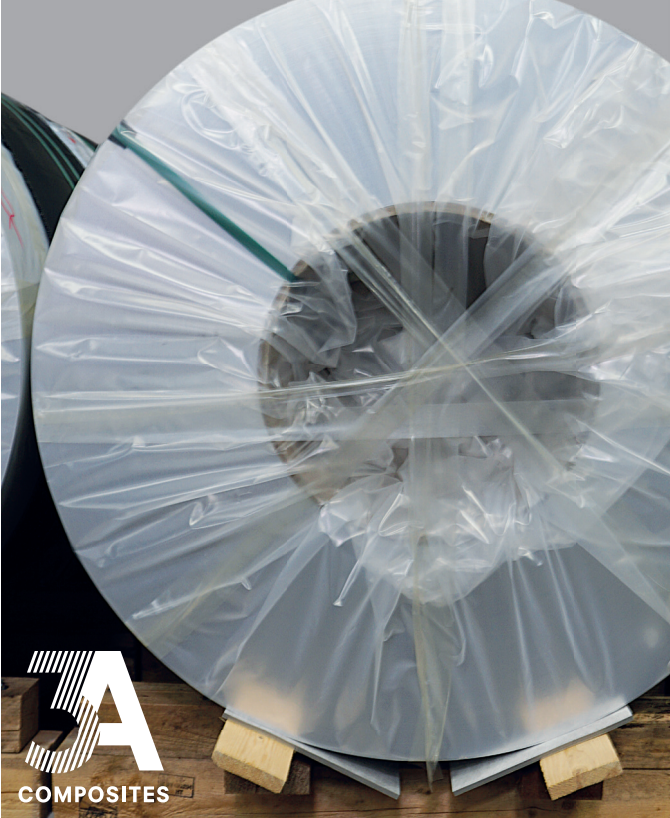
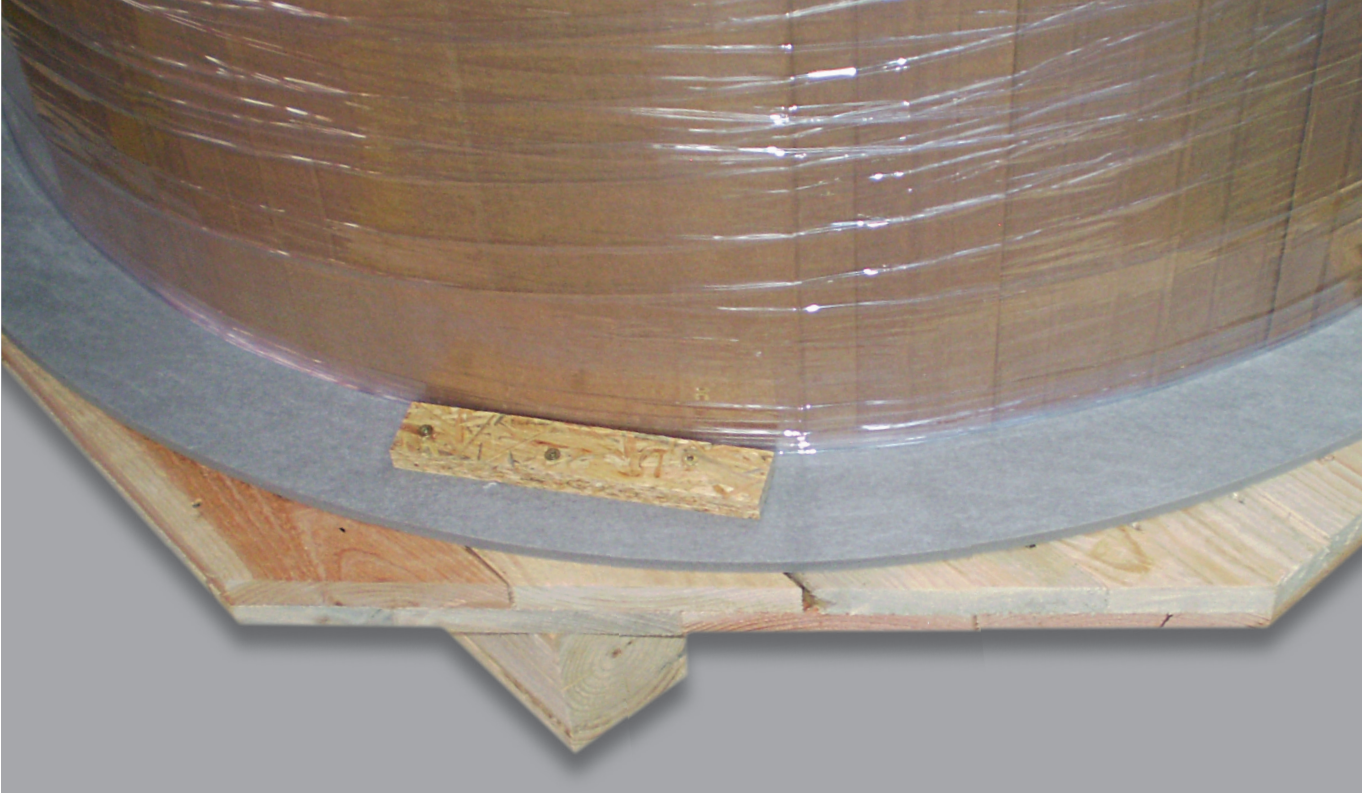
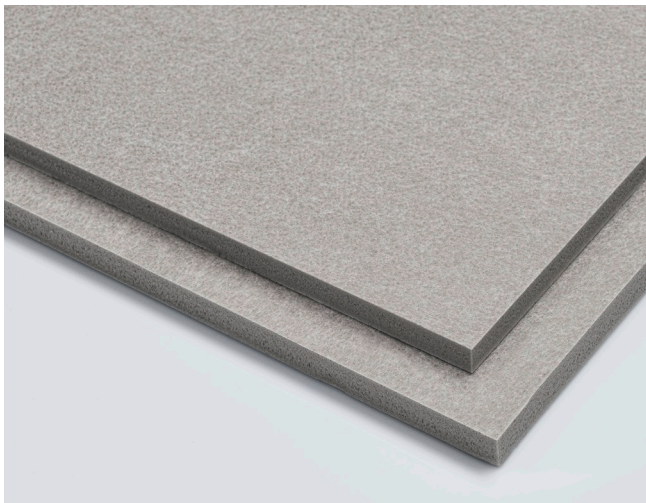


KAPA[®]protect

AT A GLANCE

Lightweight foamboard with a closed-cell polyurethane foam core and both-sides polyester nonwoven composite surface layers.





PRODUCT

- Lightweight foamboard with a closed-cell polyurethane foam core and both-sides polyester nonwoven composite surface layers
- Available cut into circular formats (round blanks)
- Very lightweight and flexible
- Good dimensional stability
- Resistant to temperature, moisture und solvents
- Lightweight and good pressure resistance

APPLICATIONS

- Wide range of uses to pack and protect products in transport e.g. coils and tube products (litho coils, metal, paper and plastic film rolls)
- Edge protection

PROCESSING OPTIONS

- Clean dust-free processing, easy to cut (knife or blade)
- Can be processed with conventional woodworking techniques on standard machines
- Use of solvent-based adhesives and hot-melts – especially single-component adhesives based on polyurethane

DELIVERY PROGRAMME

- Available in customized formats up to a maximum of 1900 mm x 3000 mm or a maximum diameter of 1900 mm
- Other thicknesses are available on request
- Delivery on pallet

Property	Unit	Method	KAPA [®] protect		
Thickness	mm		5	8	10
Tolerance			± 1		
Density (core)	kg/m ³	DIN EN ISO 845	45		
Tolerance			± 10		
Weight per unit area	g/m ²	DIN EN 29073-1	~ 305	~ 440	~ 530
Compression strength (10% compression set)	N/mm ²	DIN EN ISO 844	> 0.4		
Memory effect (10% compression set)	%	DIN EN ISO 844	~ 96		
Closed cell structure	%		> 95		

More information at: www.transport-industry.com

All data provided here is based on our current knowledge and experience. This data is not legally binding and is for information purposes only.